



ISSUE:

Issued for Permit  
08.05.2016

PROJECT: 16-018

Hampton Inn & Suites

New Stanton, PA 15672

OWNER:

Stanton Hospitality LLC

52 Blueberry Lane,  
Grove City, PA 16127

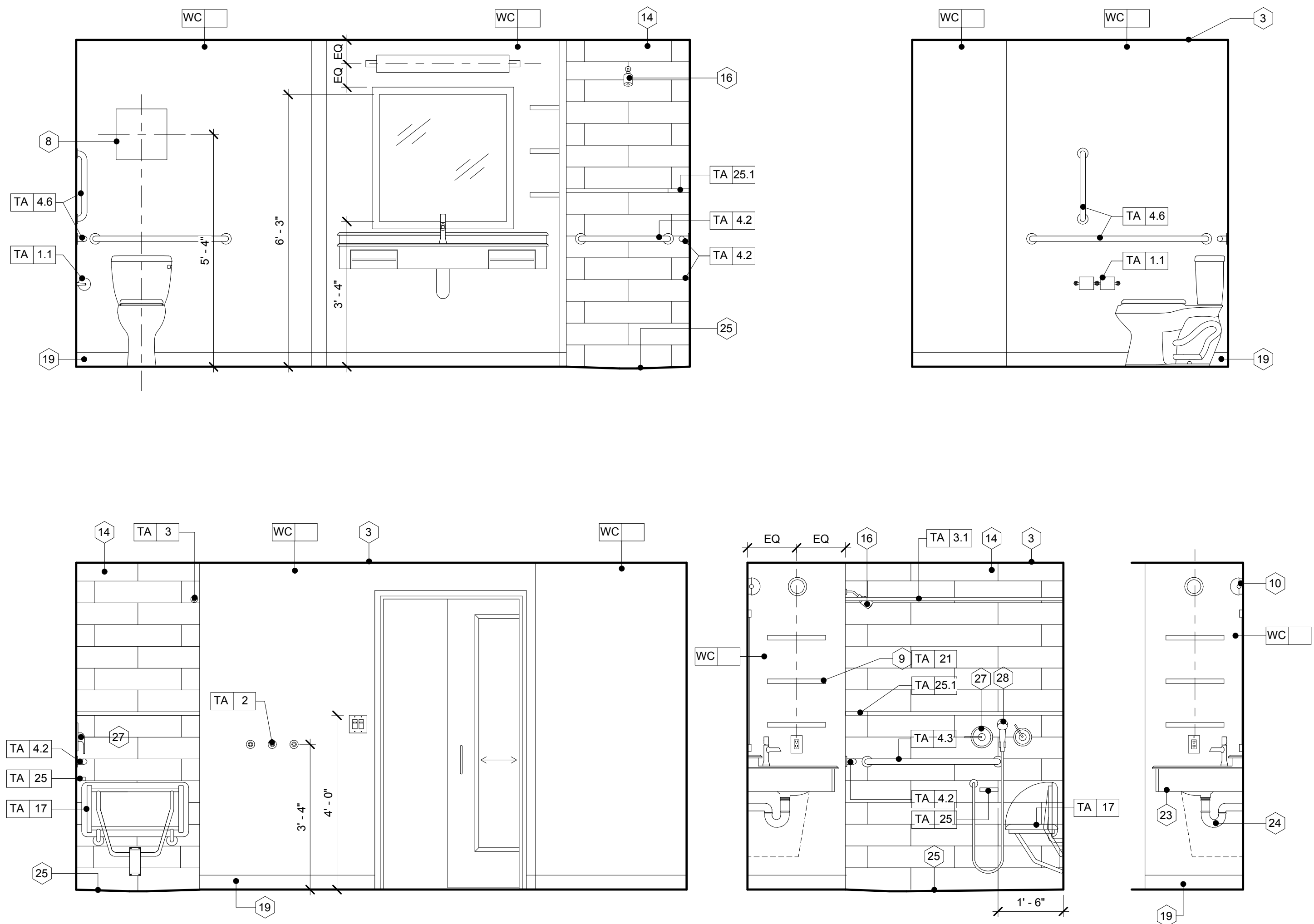
THESE DRAWINGS ARE FOR REVIEW OF DESIGN AND SCOPE DESCRIPTION ONLY. NO REPRESENTATION IS MADE TO THE ACCURACY OF THE DRAWINGS WITH RESPECT TO EXISTING DIMENSIONS OR CONDITIONS. ALL CONSULTANTS AND CONTRACTORS MUST VERIFY ANY AND ALL DIMENSIONS AND CONDITIONS WHICH ARE CRITICAL TO THEIR WORK. THESE DRAWINGS ARE INSTRUMENTS OF SERVICE AND ARE THE INTELLECTUAL PROPERTY OF JMAC ARCHITECTS. ANY UNAUTHORIZED USE OR REPRODUCTION IS PROHIBITED.

No.	Issue Date	Project Status
-----	------------	----------------

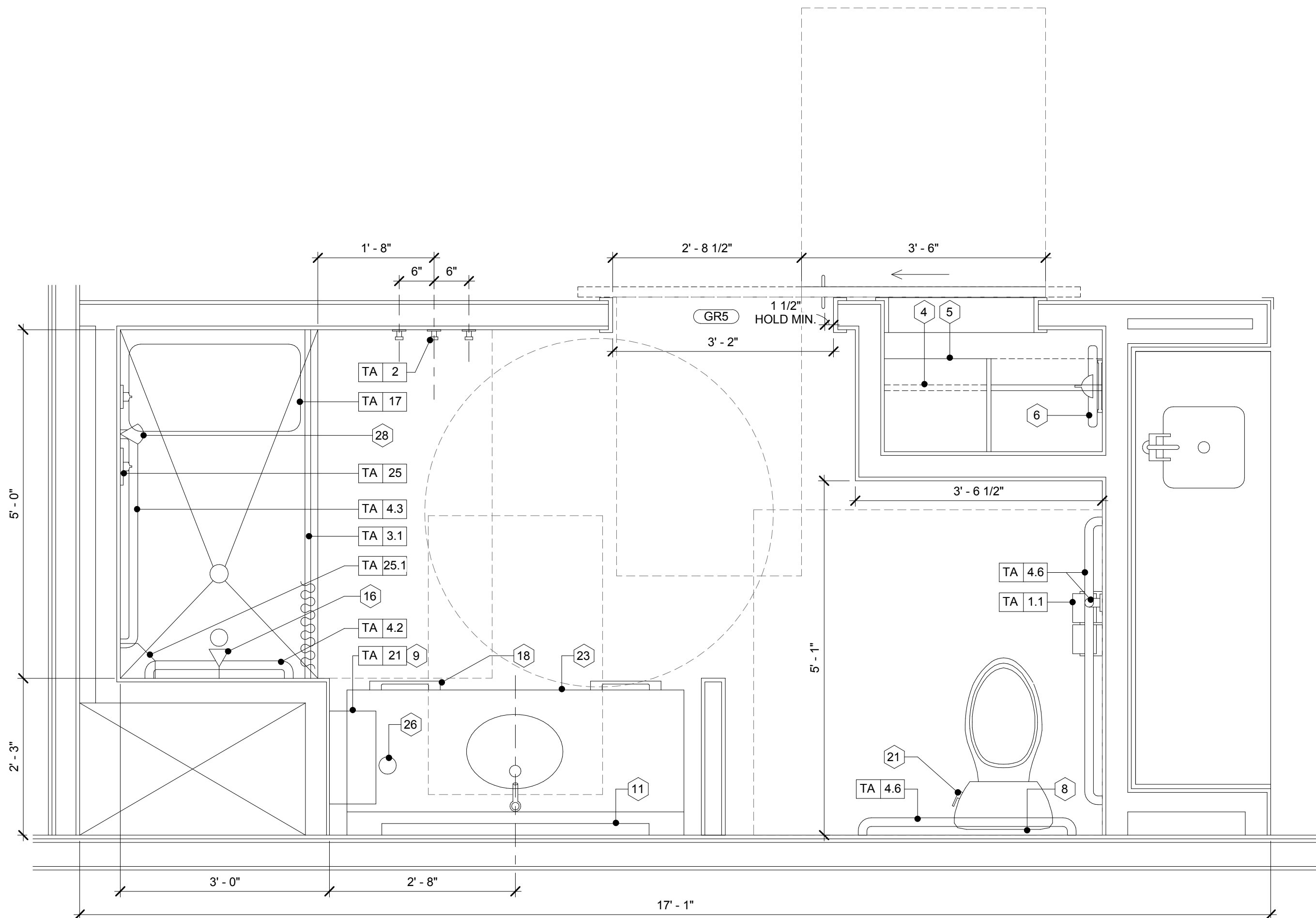
Enlarged Bathroom  
Plans, Elevations and  
Details

As indicated

A-534



1 INTERIOR ELEVATION - TYPICAL 22'-0"  
ADA DBL QUEEN STUDIO SHOWER  
1/2" = 1'-0"



2 ENLARGED PLAN - TYPICAL 22'-0" ADA  
DBL QUEEN STUDIO SHOWER  
3/4" = 1'-0"

BATHROOM KEYNOTES	
1	FULL HEIGHT CORNER GUARD, NO EXPOSED FASTENERS, COLOR TO COORDINATE WITH WALL
2	CASED OPENING - PAINTED
3	MOISTURE RESISTANT GYP. BD. (TYP.)
4	CLOSET ROD TUBING, MOUNT AT 66" A.F.F. IN TYP. GUESTROOM, AT ACCESSIBLE GUESTROOMS PROVIDE HALF THE CLOSET ROD LENGTH AT 44" A.F.F. PROVIDE ACCESSIBLE TUBING ON MOST ACCESSIBLE SIDE OF CLOSET
5	TYP. GUESTROOMS CLOSET WOOD SHELF W/ HARDWOOD EDGE AT 66" A.F.F., IN ACCESSIBLE GUESTROOMS WITH MOBILITY FEATURES, PROVIDE HALF THE CLOSET SHELF AT 46" A.F.F. PROVIDE ACCESSIBLE HANG ROD ON MOST ACCESSIBLE SIDE OF THE CLOSET - REFER TO CLOSET DETAIL
6	IRONING BOARD
7	NOT USED
8	ARTWORK
9	FLOATING TOWEL SHELVES (TA-21)
10	WALL MOUNTED LIGHT FIXTURE
11	FRAMED MIRROR
12	TYPICAL GUEST VANITY - REFER TO GUESTROOM DRAWINGS FOR GUEST ROOM FURNITURE SPECIFICATIONS
13	APPROVED SHOWER PAN - REFER TO HAMPTON STANDARD
14	APPROVED SHOWER SURROUND - REFER TO HAMPTON STANDARDS
15	CONTROL VALVE
16	SHOWER HEAD, ROUGH IN HEIGHT BETWEEN 6'-10" AND 7'-0" ABOVE FINISH
17	SLIDING GLASS SHOWER DOOR - CUSTOM HEIGHT
18	SHOWER BAR/ DRAWER PULL TO BE USED AS SECONDARY TOWEL HOLDER
19	VINYL BASE
20	BATHTUB - REFER TO HAMPTON STANDARDS
21	FLUSH LEVER MUST BE POSITIONED ON OPEN SIDE OF WATER CLOSET AS SHOWN
22	MIRROR COMPLAINT WITH ACCESSIBILITY REQS. MOUNT BOTTOM. OF GLASS AT 40" MAX. A.F.F.
23	TYPICAL ACCESSIBLE GUEST VANITY - REFER TO GUESTROOM DRAWINGS FOR GUEST ROOM FURNITURE SPECIFICATIONS
24	PROTECT PIPES PER ACCESSIBILITY REQUIREMENTS
25	ACCESSIBLE SHOWER FLOOR NOT TO EXCEED 1/48 IN ANY DIRECTION
26	PROVIDE INSULATED FLOOR DRAIN IN THIS LOCATION FOR GUEST BATHS EQUIPPED WITH ROLL-IN SHOWER DRAIN WITH 1/2" DIA DISH. FLOOR SLOPE NOT TO EXCEED 1/48 IN ANY DIRECTION. PROVIDE TRAP PRIMER - COMPLY ALSO WITH LOCAL CODE WHERE APPLICABLE
27	CONTROL VALVE LOCATION FOR ACCESSIBLE ROOMS WITH MOBILITY FEATURES
28	ACCESSIBLE ADJUSTABLE SHOWER HEAD FOR ACCESSIBLE ROOMS WITH MOBILITY FEATURES - REFER TO HAMPTON STANDARDS
29	PADDED REMOVABLE ACCESSIBLE TUB SEAT - TO BE 15" 16" DEEP AND AT 17"-19" ABOVE FINISHED FLOOR WHEN IN USE
30	ACCESSIBLE BATH TUB
31	REFER TO TYPICAL BATH TUB DRAWING
32	PROVIDE ADDITIONAL TOWEL HOOK WITH TUB OPTION